

SEC

Pharmaceutical
Health Food Factories Design
Construction Equipment
Plant & Sanitary Piping



01 COMPANY INFO

COMPANY INFO

- CEO MESSAGE
- Outline
- Vision & Strategy
- Company History
- Organisation Chart

02 BUSINESS INFO

BUSINESS INFO

- Business Area
 - Business Scale
 - Classification by Business Contexts
- Business Catalogue
- Business Area Experience
- Business Showings
- Cooperating Enterprise

03 COMPANY CERTIFICATES

COMPANY CERTIFICATES

- Business License – KOREA
- Business License - Indonesia
- MAIN-BIZ License
- ISO 9001:2015 / ISO 14001:2015 / ISO 45001:2018
- Research Institute Certificate
- Venture Business Confirmation
- Certificate of Patent
- Company Credit Rating
- Medical Supply Manufacturing License
- Medical Item KFDA License
- KMCCA Membership
- SEC & Jusung Univ. Biotech Department M.O.U
- SEC & Konyang Univ. M.O.U

04 EQUIPMENTS

EQUIPMENTS

- Equipments
- Engineering Personnel

01

COMPANY INFO

CEO MESSAGE

Outline

Vision & Strategy

Company History

Organisation Chart

**We sincerely thank our customers
for their unwavering support and
encouragement for SEC Co., Ltd.**

SEC Co., Ltd. has the best technology and quality in manufacturing facilities such as the pharmaceutical industry (bio and fine chemistry), new materials, secondary batteries, and food fields. We provide engineering services from design, manufacturing, construction, verification and post-repair in accordance with GMP, HACCP and PSM standards.

Based on the technology and capabilities accumulated through participation in various projects, we can contribute perfectly to domestic and overseas construction in line with the cost reduction and productivity improvement of factories and the transition to a global environment by reflecting excellent technology and facility systems. We will do our best to help you.

If you consider a successful project of plant design and/or construction, please contact SEC Co., Ltd.

CEO SEO, HANGBOK



02 - Company Profile

Company Name	SEC Co.,Ltd
Foundation	10 May 2000
Sales Account	\$ 25,000,000 (2022)
Number of Employee	Total 68 people (40/28)
Major Business	Pharmaceuticals (bio, fine chemicals) New materials, secondary batteries and food, Factory design & equipment manufacturing, plant facility construction



Gun-po Factory, Office (KOREA)

50, Gunpocheomdansaneop 1-ro, Gunpo-si
Gyeonggi-do, 15881, Korea
TEL_+82-31-351-9341



Hwa-seong Factory (KOREA)

8, Songsansandan 2-gil, Songsan-myeon,
Hwaseong-si, Gyeonggi-do, Korea
TEL_+82-31-461-4560



PT. THE GLOBAL ASEAN (INDONESIA)

South Quarter, Tower A, 18th Floor
Jl.RA Kartini kav 8 Cilandak Barat, Jakarta 12430



Vietnam Office

Nguyen Oanh Street, Ward 17
Go Vap Dist, Hochiminh, Vietnam

There are SEC’s footprints passed through.
Established since 2000, we have achieved continuous innovation as well as a leap forward.

Foundation

2000 ~2002

- Seolim Engineering Established
- Incorporated Seolim Co.,Ltd
- The Office Building Extension Moved

Expansion

2003 ~2005

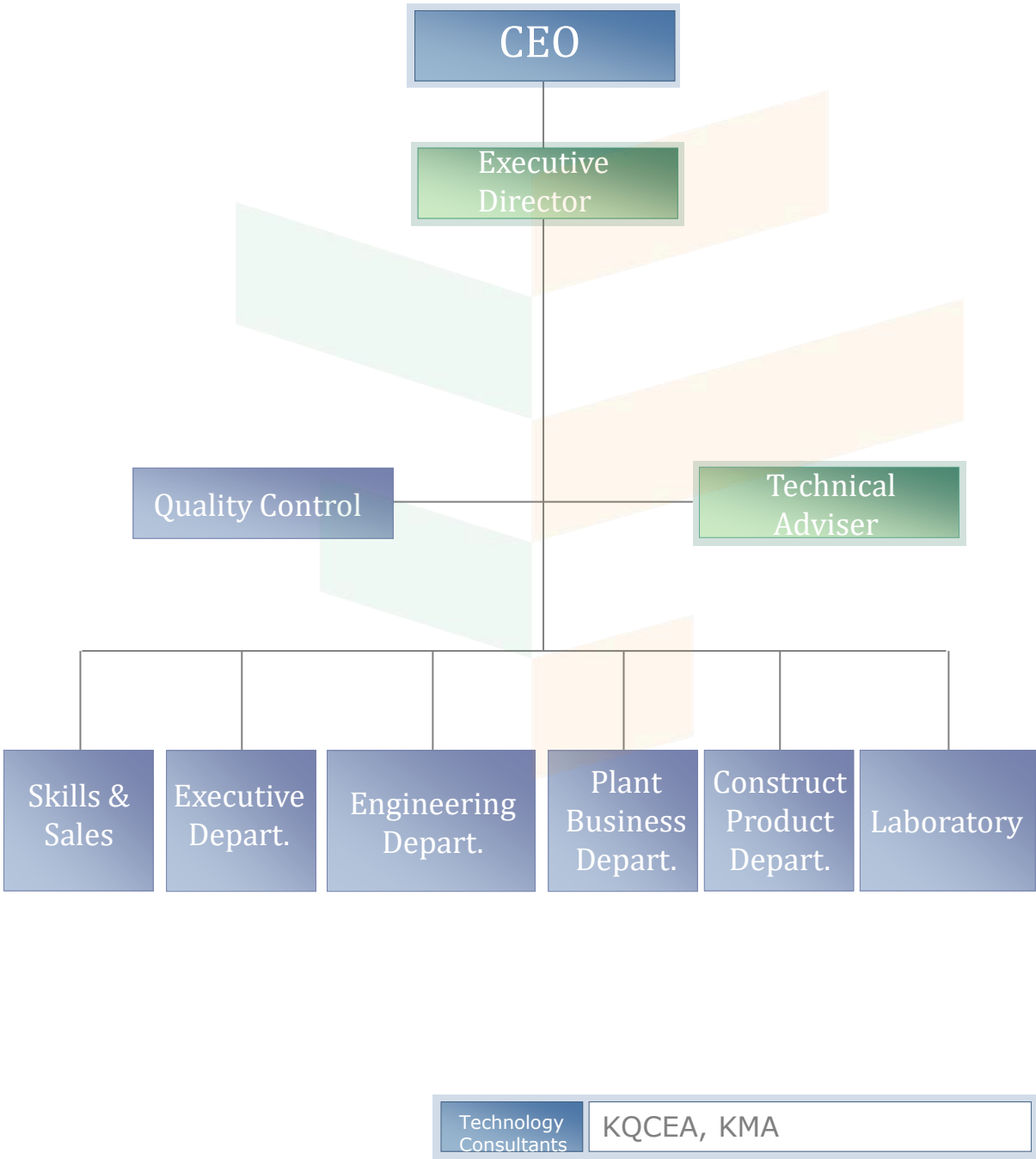
- Became Incorporated with Head Office & Factory
- Selected as an Outstanding Enterprise by the Small and Medium Business Administration
- Selected as an Outstanding Enterprise (KIBO)
- Built New Factory in Hwasung
- ISO 9001 Obtained Certification
- Hwasung Factory Moved

Globalization

2006 ~ Present

- Changed the Company name (SEC Co.,Ltd)
- Head Office & Office moved to Doosan Venture
- Made a Contract to move into Osong Life Science Complex
- SEC Co.,Ltd Affiliated Laboratory Certificate Registered by KOITA
- With Jusung College Bio Life Department Established a Consortium Exchange
- HAEDONG Technology Co.,Ltd Subsidiary Company became incorporated with
- Built New Factory & R&D Center in Osong
- Participated in Guangzhou comprehensive trade fair 2011 in China
- Bio based Word atACHEMA 2012 in Germany
- 2017 Establish branch office in Indonesia
- 2017 ASME Certified
- 2018 Establish Gun-po branch office in Korea
- 2018 ISO 9001:2015 Certified
- 2018 Singapore Exhibition PHAR-EAST (ASIA’S PHARMA & BIOTECH FESTIVAL)
- 2018 Indonesia Exhibition 19th ALL PACK INDONESIA
- 2021 Built New Factory in Hwa-seong

SEC Co.,Ltd is composed of the accumulation of Technical Skills
and the solid Organisation Power.



02

BUSINESS INFO

Business Area

- Business Scale
- Classification by
Business Contexts

Business Area Experience

Business Showings

Cooperating Enterprise

In order to provide the optimum solution, from planning, design, procurement, construction & supervision and post-construction SEC Co.,Ltd offers the services basis of client requirements and differentiated professional skill.

Business Scale

Planning

Project Discovering & Planning,
Business Value Examination, Group Budget,
Schedule Plan, Risk Manage, Financial Procure

Design

Basic Design & Detail Design, Draw up Specifications
Analysis Production Cost & Examine Construction,
VE, Authorisation

Procurement

Purchase Equipments, Process Control, Production,
Inspection & Transportation, Manage Delivery

Construction & supervision

Construction, Process, Safety Supervision &
Quality Assurance, Construction Supervision,
Construction Industry Administration,
Examine New Technology & Construction Methods

Post-Construction

Trial Run, Maintain & Repair, Training

Classification by Business Contexts of Conditions

Equipment Production

[Fermentor]



Classification by Business Contexts of Conditions

Equipment Production

[Reactor, Concentrator, Extractor]



Classification by Business Contexts of Conditions

Equipment Production

[Sterile fine chemical]



Classification by Business Contexts of Conditions

Equipment Production

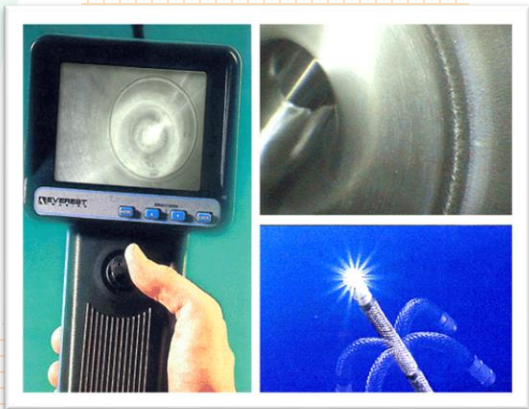
[Other Equipments]



Classification by Business Contexts of Conditions

Pipe

[Sanitary Pipe]



Classification by Business Contexts of Conditions

Pipe Facilities

[Process Pipe]



Classification by Business Contexts of Conditions

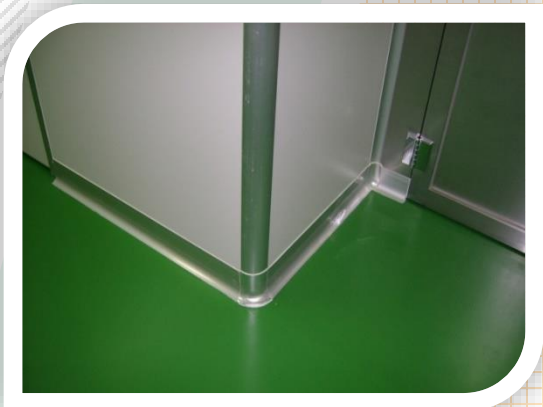
Pipe Facilities

[Utility Pipe]



Classification by Business Contexts of Conditions

Clean Room System



MESSAGE

[주]에스이씨는 생명공학, 정밀화학 및 건기식품 등, 제조설비에 최고의 기술력과 품질로 시설에 부합되는 GMP(PIC/s, euGMP, cGMP), HACCP 기준에 의한 설계, 시공, 운전, 검증 및 사후 보수까지의 엔지니어링 서비스를 제공하고 있습니다.

[주]에스이씨는 제약 및 원료(Bio, Fine Chemical)공장, 건기식품공장에 폭 넓은 Project에 참여한 축적된 기술과 역량을 바탕으로 보다 나은 기술 및 설비 시스템을 반영하여 공장의 원가절감과 생산성 향상, 더 나아가 글로벌 환경으로의 전환에 발 맞추어 국내, 국외의 시공에 완벽하게 이바지 할 수 있도록 최선을 다할 것 입니다.

설계 및 시공에 있어서 성공적인 프로젝트를 생각하고 계시다면 [주]에스이씨를 선택하여 주십시오.

Pharmaceutical Health Food Factories Design Construction Equipment Plant & Sanitary Piping

SEC Co., Ltd. provides high quality engineering services of design, construction, trial operation, verification and post-construction maintenance in accordance with GMP(PIC/s, euGMP, cGMP) and HACCP in the field of genetic engineering, fine chemicals and health foods.

With techniques and systems stored up through numerous projects of pharmaceutical, bio, fine chemical and health food plants, SEC Co., Ltd. will provide cost reduction and enhanced productivity in plant construction domestic and overseas.

If you consider a successful project of plant design and/or construction, please contact SEC Co., Ltd.

CEO
Hang Bok, Seo

Engineering & Construction

Pharmaceutical, Health Food, Cosmetic



GMP Plant Process

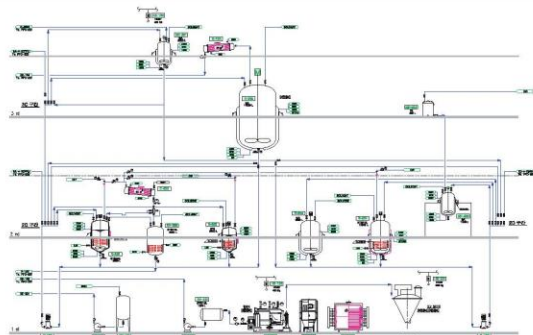


Engineering & Construction

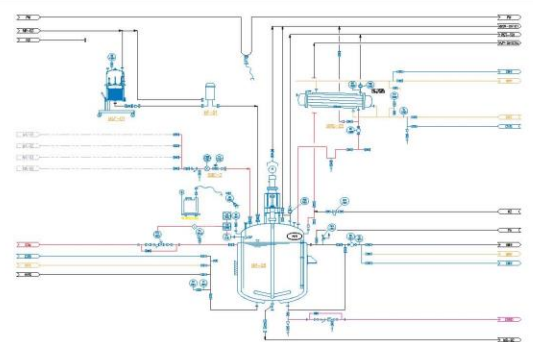
Pharmaceutical, Health Food, Cosmetic

Engineering & Construction

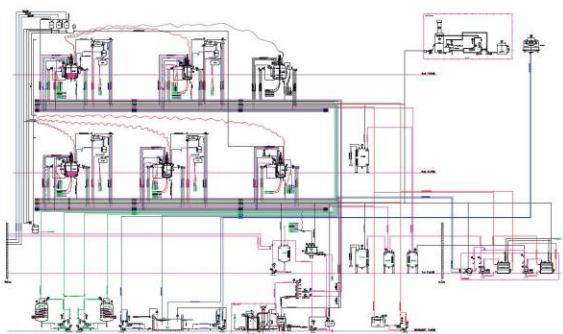
PFD



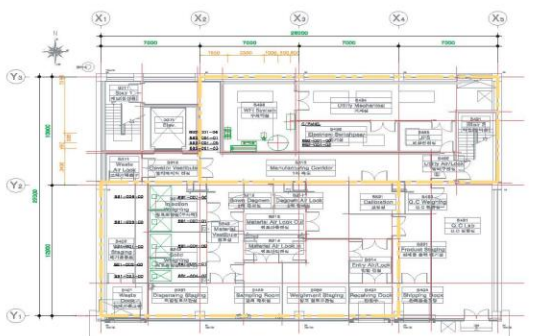
P&ID



FLOW



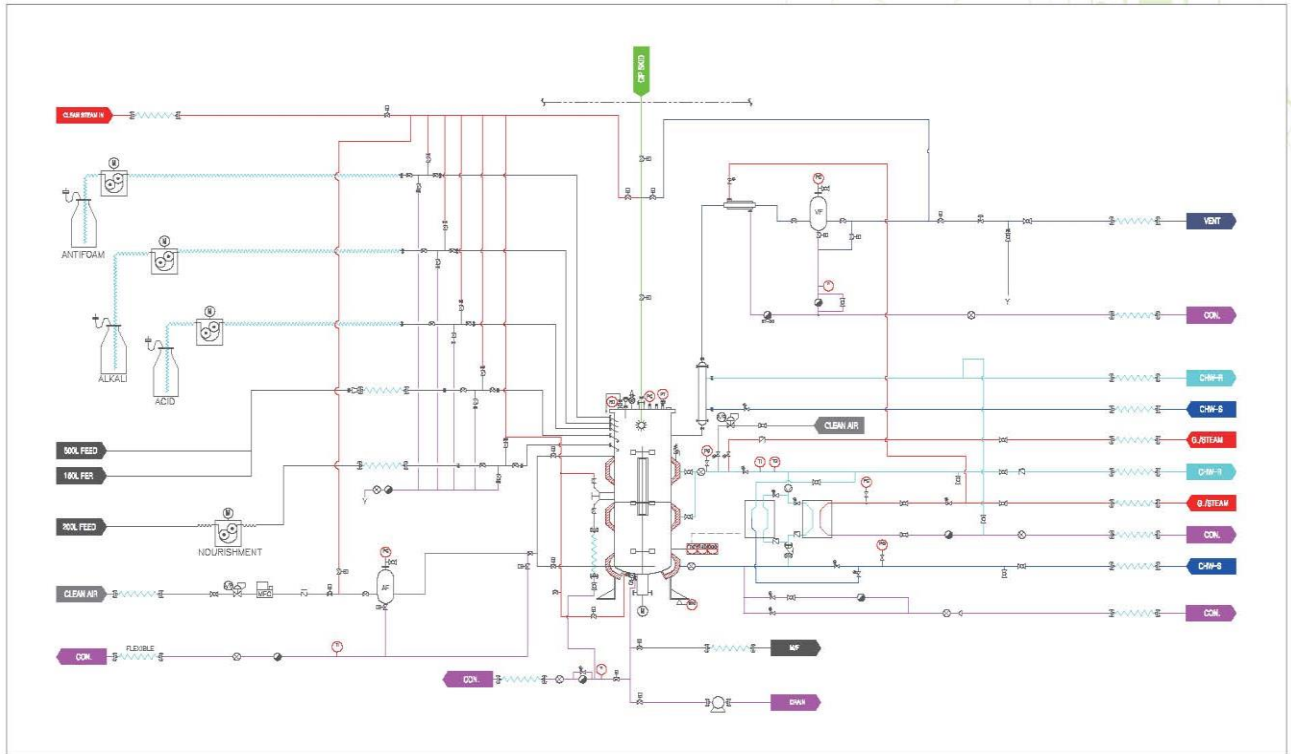
PLOT PLAN



Engineering & Construction

Pharmaceutical, Health Food, Cosmetic

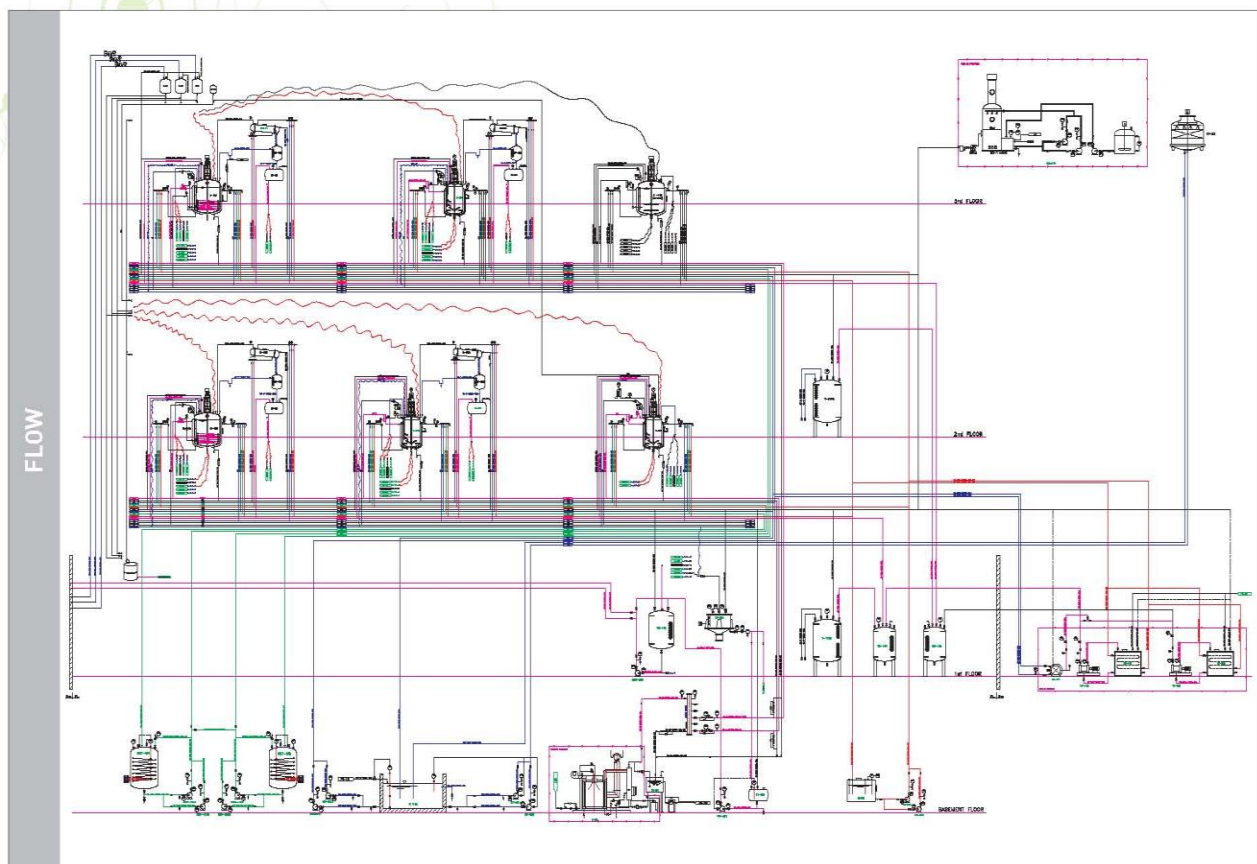
Fermentor & Bioreactor system



Engineering & Construction

Pharmaceutical, Health Food, Cosmetic

Fine Chemical



Fermentor & Bioreactor Systems

Bioreactor systems

- Purpose** Mammalian(Insect) cell and virus cultivation
- Material**
- Product contact area : 316L stainless steel with electro-polished (15 ~ 20 Ra)
 - Other area : 304 stainless steel

Various capacities are available (30L ~ 1,000L)

Process piping and diaphragm valves are connected with automatic orbital welding.

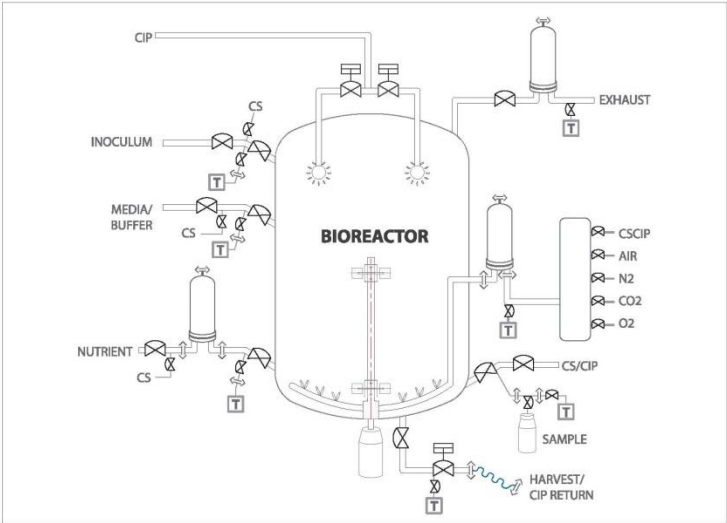
Simple bottom drive AC motor can make 10 ~ 300 rpm transmission speeds.

Automatic control of temperature, pressure, air flow, agitation speed, pH, dissolved oxygen (pO2), foam and level are possible with required range.

All process data including process trends can be stored and printed in the control system which can be connected to other control system easily.

Automatic full CIP & SIP are possible.

GMP documentation & Supports for 21 CFR Part 11 requirements (Option)



Bioreactor

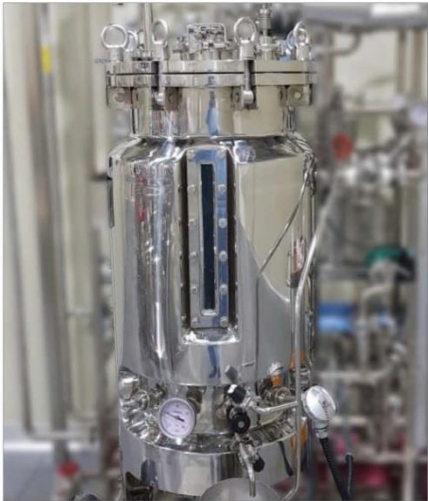
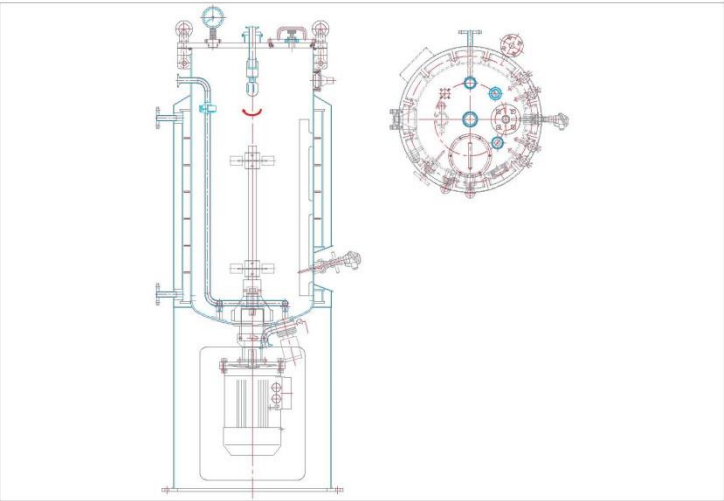
(m/m)

Model	Working Vol. / Total Vol.	Dia. (D)	Height (H)	Impeller Diameter	Total
SBR 30	30L / 45L	300	700	115	2.3 : 1
SBR 50	50L / 75L	350	820	130	2.3 : 1
SBR 80	80L / 110L	410	900	150	2.2 : 1
SBR 100	100L / 150L	440	980	165	2.2 : 1
SBR 300	300L / 400L	630	1,290	250	2 : 1
SBR 500	500L / 650L	750	1,500	280	2 : 1
SBR 1000	1,000L / 1,350L	950	1,900	355	2 : 1

Fermentor & Bio Reactor Systems

Pilot scale fermentor systems

- Purpose** Bacteria, yeasts and fungal fermentation
- Pilot / 1st seed Fermentor for production purposes according to various fermentation Stainless Steel 304, 316L and product contact surfaces are first mechanically polished and then electropolished(15-20 RA).
- Choose a variety of specifications available (30l ~ 1,000l)
- AC motor top structure is simple and transmission speeds up to 10~300RPM speed is possible, Top & bottom drive agitation system.
 - Stable temperature, pressure, air flow, stirrer speed, pH, dissolved oxygen(pO2), foam on/off, level on/off, cell density suppression everything possible to automatically control and input / output is possible.
 - Process piping and diaphragm valves auto orbital welded.
 - All data printers, and other systems to easily connect to a computer store and time management are available.
 - Optional GMP documentation & support 21 CFR Part 11 requirements.
 - Optional CIP, SIP systems.



Fermentor (Pilot/Seed)

(m/m)

Model	Working Vol. / Total Vol.	Dia. (D)	Height (H)	Impeller Diameter	Total
SFS 30	30l / 45l	300	700	150	2.3 : 1
SFS 50	50l / 75l	350	820	175	2.3 : 1
SFS 80	80l / 110l	410	900	200	2.2 : 1
SFS 100	100l / 150l	440	980	230	2.2 : 1
SFS 200	200l / 260l	550	1,100	280	2.2 : 1
SFS 300	300l / 400l	630	1,290	330	2 : 1
SFS 500	500l / 650l	750	1,500	380	2 : 1
SFS 1000	1,000l / 1,350l	950	1,900	480	2 : 1

Fermentor & Bioreactor Systems

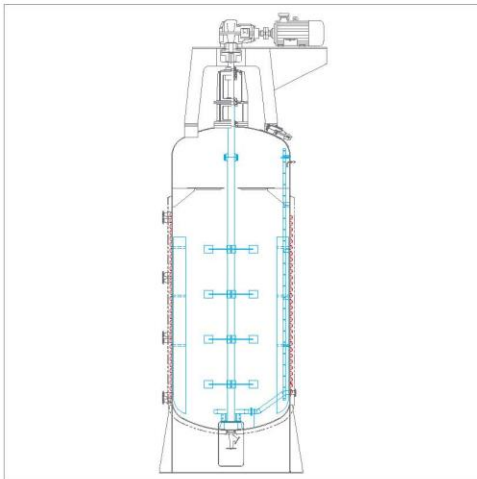
Industrial scale fermentor systems

Purpose Bacteria, yeasts and fungal fermentation

Industrial production is used as 2nd seed & Main fermentor Stainless Steel 304, 316L and product contact surfaces are first mechanically polished and then electropolished(15-20 RA).

Therefore, accurate and easily verified by the control system should be able to control. To facilitate data input and output is the HMI System. Therefore, Touch screen computer can control the interlocking control.

- Choose a variety of specifications available [1,000l ~ 10,000l]
- AC motor top structure is simple and transmission speeds up to 50 ~ 250RPM speed is possible.
- Stable temperature, pressure, air flow, stirrer speed, pH, dissolved oxygen(pO₂), foam on/off, level on/off, cell density suppression everything possible to automatically control and input / output is possible.
- Process piping and diaphragm valves auto orbital welded.
- All data printers, and other systems to easily connect to a computer store and time management are available.
- Optional GMP documentation & support 21 CFR Part 11 requirements.
- Optional CIP, SIP systems.



Fermentor (Seed/Main)

(m/m)

Model	Working Vol. / Total Vol.	Dia. (D)	Height (H)	L/D
SFM 10	1,000l / 1,350l	950	1,900	2 : 1
SFM 20	2,000l / 2,600l	1,180	2,400	2 : 1
SFM 30	3,000l / 3,850l	1,350	2,700	2 : 1
SFM 50	5,000l / 6,250l	1,580	3,200	2 : 1
SFM 100	10,000l / 12,500l	2,000	1,4,000	2 : 1
SFM 300	30,000l / 37,500l	2,850	5,900	2 : 1
SFM 500	50,000l / 59,000l	3,350	6,800	2 : 1
SFM 1000	100,000l / 119,000l	4,200	8,600	2 : 1

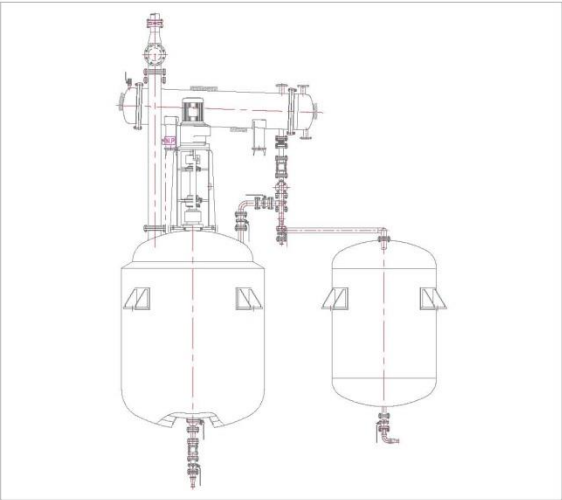
Chemical Reactor Systems

Reactor Systems

Fine Chemical of a variety of reactors, concentrate, extraction, crystallization process has been used is to perform. Pilot reactor in the laboratory from a complete production plant is applied to various types of reactions can be run. Using the system, and other types of multi-purpose replacement for its ability to produce products are also available. On the outside of the reactor jacket, heating, mixing, melting, mixing echnology and specialized designs, such as pH adjustment was made.

Reactor, the heating system, cooling system, reactor and column, reflux, condenser, vacuum system works. The system can automate all of the reactor, and the validation, data archiving and possible.

- Optional GMP documentation & support 21 CFR part 11 requirements.
- Optional CIP. SIP system.



Reactor

(m/m)

Model	Working Vol.	Dia. (D)	Height (H)	Heating Area
SFR 01	100l	500	700	0.93
SFR 02	200l	630	800	1.47
SFR 03	300l	700	950	2.18
SFR 05	500l	820	1,150	2.9
SFR 10	1,000l	1,150	1,300	4.6
SFR 20	2,000l	1,350	1,700	7.0
SFR 30	3,000l	1,530	1,950	9.9
SFR 50	5,000l	1,800	2,200	13.4
SFR 100	10,000l	2,250	3,000	22.4
SFR 150	15,000l	2,600	3,350	28.4
SFR 200	20,000l	2,950	3,600	35.6

Wild Panax Ginseng Systems

Wild Panax Ginseng Systems

What is Wild Ginseng? The scientific name is Panax C.A Meyer. Russia in 1843 by botanist Carl Anton von Meyer was named. Pan of Panax with the Greek language "all" means. In addition, Axos "the treatment and medicine" refers to the complex meaning is meant for all the diseases.

Panax ginseng C.A. Meyer has strong anticancer, antidiabetic, antioxidant activity, various physiological functions, and is used as a nutritional and medicinal supplement.

For many thousand years, mankind has been using various plants as nutrient, beverage, cosmetics, dye and medicine to maintain health and to improve quality of life. In Aisa, particularly, Panax ginseng C.A. Meyer is considered to be the most.



100 years old
Wild ginseng



Callus induction



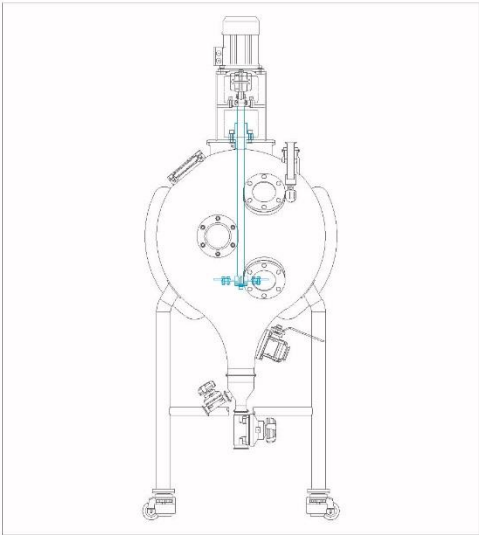
Adventitious
root induction



Selection of
root line



Final product



20L -50L
Bio reactor

50L~1,000L
Bio reactor

10ton
Plant bio reactor

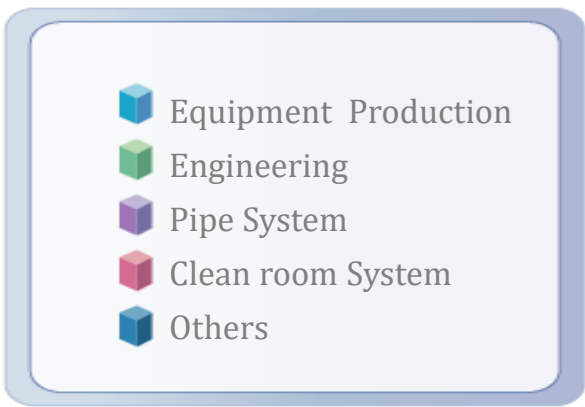
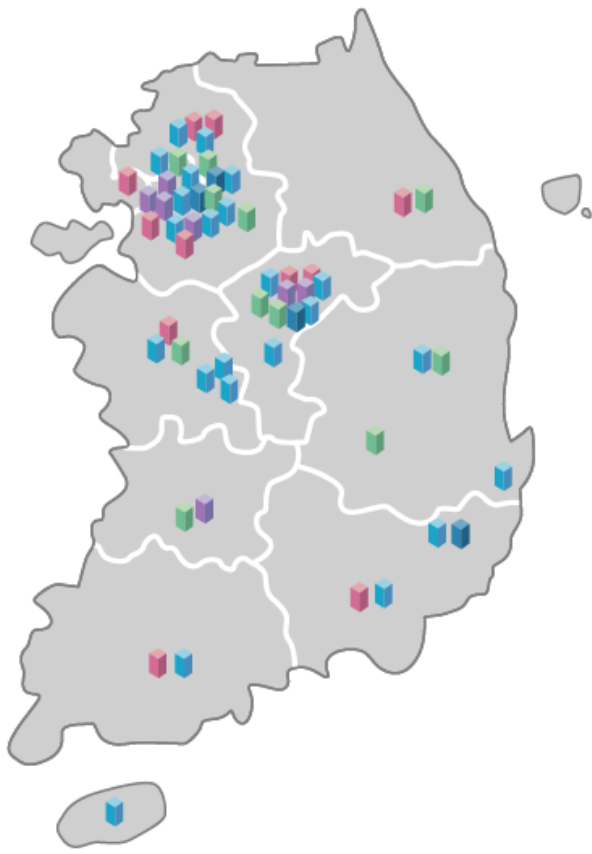
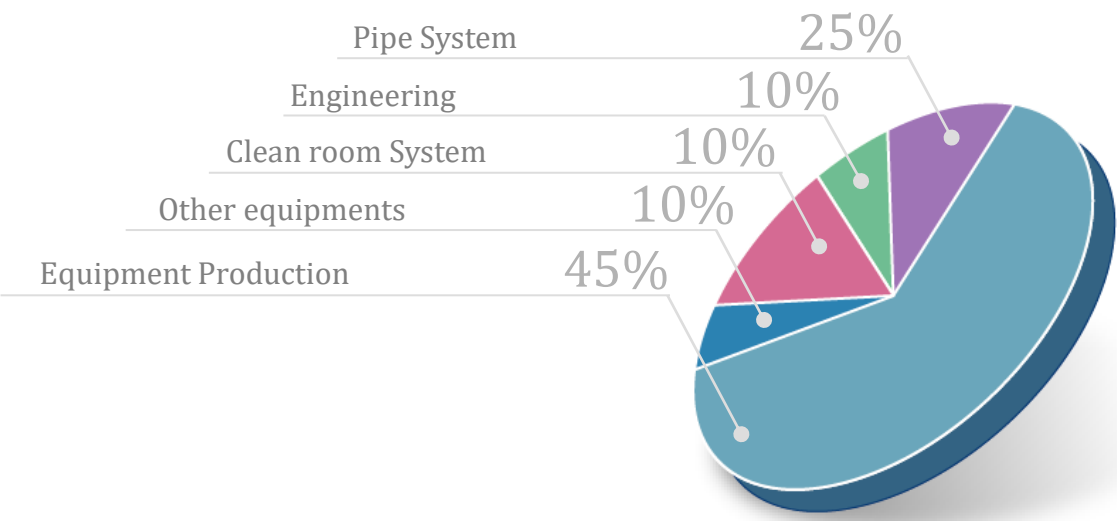


Wild Panax Ginseng

(m/m)

Model	Working Vol. / Total Vol.	Dia. (D)	Height (H)	L/D
SGB 50	50L / 75L	250	320	1 : 1
SGB 100	100L / 150L	310	450	1 : 1
SGB 300	300L / 400L	430	600	1 : 1
SGB 500	500L / 650L	500	750	1 : 1
SGB 1000	1,000L / 1,350L	640	500	1 : 1

SEC Co.,Ltd is continuing to do business with a focus on making close relationships with Clients as well as improving customer satisfaction by the march of technology and a careful analysis of client requirements.



SEC Co.,Ltd is continuing to do business with a focus on making close relationships with Clients as well as improving customer satisfaction by the march of technology and a careful analysis of client requirements.

Name of Company	Year	Performance	Note
[2023]			
GREEN MINERAL	2023	Chlorella cultivation process PILOT PLANT equipment construction	
NEO CREMAR	2023	Reaction Tank JACKET Leakage Supplement	
SNC-Lavalin KOREA	2023	ST Pharm 2 nd Oligo Project Process Engineering	
Puriogen	2023	Resin Production equipment & Pilot equipment supply construction	
DEERS E&C	2023	Bench Scale Construction	
Sun-bio	2023	Production facility installation new construction	Incheon
Kuk-jeon	2023	New factory equipment construction for material division	Eum seong
Hyun-dai Bioland	2023	HA expansion construction	Ansan
Kuk-jeon	2023	New factory equipment construction for material division	
[2022]			
Noroo Holdings	2022	EHA Facility construction	
Dongkook Pharm	2022	HA Facility Construction	
Chong Kun Dang	2022	Fermentation facility construction	
Cenyxbiotech	2022	API Facility Production and Installation	
Kuk-jeon	2022	Material Business Division Factory Construction Engineering	Eum seong
BioPlus	2022	Purified water system manufacturing and installation	
KSCP	2022	Acupuncture, general herbal medicine facility Construction	
Quratis	2022	Osong Plant DP Mobile preparation tank production	Osong
Gcem	2022	Refrigerant pipe replacement work for PD2 pipe Centrifugal separator	
Doorechon	2022	Chungju factory coarse grain processing equipment	Chung ju
PHYCOIL BIOTECH	2022	Cultivation and Utility process Design	Se jong
Crop Science	2022	Grinding process TURN KEY construction	Dae jeon
SUN Bio	2022	Excipient API Process Design	
BNC Korea	2022	Anti-toxic Soy Sauce Extract Construction & TURN KEY	Se jong

SEC Co.,Ltd is continuing to do business with a focus on making close relationships with Clients as well as improving customer satisfaction by the march of technology and a careful analysis of client requirements.

Name of Company	Year	Performance	Note
[2022]			
Green Chemical	2022	Process facility construction	Geum wang
Ecopro BM	2022	CAM4/5 facility construction	Ochang
SK Chemical	2022	Outdoor storage facility construction	Cheong-ju
KIMIA FARMA	2022	Povidone raw material factory construction	Indonesia
[2021]			
CMDL	2021	new construction engineering	
HanKook Shinyak	2021	new construction engineering	
Biocare	2021	Deer antler extraction facility new engineering & Turn key	
OptBio	2021	Fermentation, Extraction Stretch Engineering & Turn key	Gangneung
Hyundai Bioland	2021	New product mass production extension construction	O-song
Curatis	2021	CIP facility construction	
Jaseng Oriental Hospital	2021	New manufacturing facility construction	Seong nam
SK Plasma	2021	dispensing facility construction	
Hwail Pharma	2021	Purified water supplementation work	
SK chemical	2021	Natural product API extraction and solvent facility construction	
Dong-hwa Chem.	2021	Itchi paste facility construction	
Dermafirm	2021	Fermentation and extraction facility construction	
JW-Pharma	2021	TPN 1-1 facility construction	
Dongkook	2021	API new facility turn-key construction	

SEC Co.,Ltd is continuing to do business with a focus on making close relationships with Clients as well as improving customer satisfaction by the march of technology and a careful analysis of client requirements.

Name of Company	Year	Performance	Note
[2020]			
GC	2020	GC Green Cross Cell Center plumbing Construction	
GC	2020	GC Green Cross Wellness Plumbing Construction	
KT&G	2020	Alcohol concentrate dilution facility construction	
KT&G	2020	red ginseng thickener facility construction	
Quratis	2020	New plant facility Turn Key Construction in O-song	
LPN	2020	Gamma preparation Equipment Construction	
CMDL	2020	Expansion Turn Key Construction in Cheon-an	
CKD Bio	2020	New plant mechanical facility Turn Key Construction	O-song
Caregen	2020	New plant facility Turn Key Construction in Jeon-gok	
NR	2020	Turn Key Construction	
Bolak	2020	Health functional food extraction facility construction	
JW-Pharma	2020	Raw material plant Reactor manufacture	Si-hwa
JW-Pharma	2020	High-speed dissolution system manufacture	Si-hwa
Coca-Cola korea	2020	DG manufacturing facility Turn Key Construction	
Korea Yakult	2020	Probiotics Expansion factory Turn Key Construction	
CKD Bio	2020	Probiotics New factory Turn Key Construction	An-san
B&C Korea	2020	BIO KILL SYSTEM facility Manufacture and Construction	
Dong-A Pharm	2020	Medicine Manufacture and Construction	I-cheon

SEC Co.,Ltd is continuing to do business with a focus on making close relationships with Clients as well as improving customer satisfaction by the march of technology and a careful analysis of client requirements.

Name of Company	Year	Performance	Note
[2019]			
Cowell-medi	2019	FERMENTOR SYSTEM facility Manufacture and Construction, Operation	
Ecopro bm	2019	CAM5 sludge washing process Tank/Liquid Pipe line construction and Installation,	
SK bioland	2019	fermenter Cooling system improvement construction	An-san
Myungmoon Pharm	2019	New GMP construction	
SK bio science	2019	CIP SYSTEM Manufacture and construction	
Green-cross	2019	New factory PW System & process piping construction	O-chang
Yonsung Chemical	2019	Produce New factory Construction(TURN KEY)	
Morechem	2019	Synthesis reaction equipment manufacturing construction	
Neo cremar	2019	Iksan plant equipment manufacturing, piping, electricity turn key construction	
Sungroup	2019	Raw material tank production and installation work	
Anygen	2019	Peptide drug substance reactor construction	
JW-Pharma	2019	Disinfectant preparation tank manufacturing and installation	
[2018]			
Yungjin Pharm	2019	B-Factory production facilities TURN KEY construction	
Chemtros	2019	New Factory Reactor and construction	Jin-cheon
Natural way	2019	New Factory extractor Turn-key construction	
Dong-kook Pharm	2018	completion prepare TANK & SYSTEM construction	
JW-Life Science	2018	3FL TPN TAT-22 process manufacture and construction	
Dong-kook Bio Pharm	2018	K-factory production Clean-room construction	
gcem	2018	QM Line PW System Manufacture and Construction	O-chang
Medicakorea	2018	BIO KILL SYSTEM Manufacture and Construction (2nd 0.75TON)	
LPN	2018	G/L reactor Manufacture and Construction	Bal-an
Bolak	2018	Factory Structure & piping/electronic construction	

SEC Co.,Ltd is continuing to do business with a focus on making close relationships with Clients as well as improving customer satisfaction by the march of technology and a careful analysis of client requirements.

Name of Company	Year	Performance	Note
[2018]			
SungWun Pharmacopia	2018	Ye-san Factory Vacuum dryer, mixer construction and Installation	
Bolak	2018	Health functional food and Remodeling Construction for Pharmaceutical workshop	
LPN	2018	Production facility Maintenance	
Kuhnill Pharm.	2018	Mini soft capsule molding machine and Tumbler Dryer Hook-up Construction	
Daewoong Bio	2018	Supplementation of Sulfuric Acid Tank Facility	
Ecopro bm	2018	CAM4N CIP Tank and Piping Construction	
Hankook shinyak	2018	Extraction facility Manufacture and Construction	
Moachem	2018	API(Reactor system) Manufacture and Construction	
Neocrema	2018	Product Equipment, Pipe, Electric facility Turn key Construction	
Seungil-SUN	2018	Mixer Tank Manufacture and Construction	
Anigen	2018	API(Peptide Reactor facility) Turn key Construction	
JW Holdings	2018	Antiseptic solution Tank Manufacture and Construction	
[2017]			
Il-sin Chemical	2017	Ilshin Chemical purified water LOOP expansion construction	
Chemtros Co.,Ltd	2017	Turn-key construction of new plant of synthetic factory	
Daewoong Bio	2017	1 Factory raw material warehouse logistics construction change construction	
Central Vaccine	2017	Central Vaccine Nonsan Factory Process Piping Construction	
Moachem	2017	Synthetic equipment manufacturing construction	
Estee Pharm	2017	Oligo raw material pharmaceutical factory new facility production facility construction	
LG Eletric	2017	Lithium-ion battery battery equipment engineering	
DaeWoong Bio	2017	1 Process 2 and Rotary Dryer Production & Installation	
Yungjin Pharm	2017	Raw material medicine reactor (R-301) facility construction	
JW Holdings	2017	Eye drop preparation Tank Construction	
SK Bio land	2017	Extraction facility Manufacture and Construction	An-san
JW Holdings	2017	Sand Filter removal and Bag Filter System Installation	

SEC Co.,Ltd is continuing to do business with a focus on making close relationships with Clients as well as improving customer satisfaction by the march of technology and a careful analysis of client requirements.

Name of Company	Year	Performance	Note
[2017]			
Penmix	2017	Freeze dryer piping and freezer cold water system construction	
JW-Life Science	2017	Pure steam potable sampler and piping Construction	
MyungMun Co.	2017	cGMP Plant Engineering Construction	
Moachem	2017	API (Fermentation facility) Turn key Construction	
Bolak	2017	API(Synthesis, Extraction) Engineering and Construction Design	
PT. KIMIA FARMA SungWun Pharmacopia	2017	Engineering Turn Key Construction	
HANKOOKSHINYAK Pharmaceutical	2017	New Production of Wild ginseng culture medium etc. Equipment Construction	
[2016]			
Sampio	2016	Woori Fermentation Facility Construction	
DaeWoong Bio	2016	Double Cone F/D Dryer and other 5 equipment and piping Construction	
SK Bio Land, Ansan Facility	2016	PSM complementary Construction	
SK Plasma	2016	Reaction Tank Stage Turn key Construction	
Sung Woo Chemical, Hyang Nam Facility	2016	Steam and Condensate piping Construction in production building	
YunGin Pharm	2016	Process piping facility Construction	
Korea Yakult	2016	SEED CHAMBER Facility Manufacture and Construction	
Bolak	2016	whole PSM related complementary Construction	
MyungMoon Pharm	2016	Nuch filter Construction	
Sam yang Bio Pharm	2016	Styptic NO2 Reaction Room complementary Construction	
Hugel	2016	Alcohol Filtration Equipment Installation	
SK Plasma	2016	CIP System and Process & CIP piping Turn key Construction	
Dong Bang Medical	2016	HA Facility and Piping Turn key Construction	
Dong Bang Medical	2016	Mark pack Manufacturing facility etc.	
Hansbiotec	2016	New Ginseng Incubator Manufacture etc.	
Penmix	2016	Penmix # 2Facilty Freeze Dryer & Utility Piping construction	
SK Plasma	2016	Plasma Fractionation Facility Turn key Construction	

SEC Co.,Ltd is continuing to do business with a focus on making close relationships with Clients as well as improving customer satisfaction by the march of technology and a careful analysis of client requirements.

Name of Company	Year	Performance	Note
[2015]			
Hyundaipharm	2015	Piping Equipment Construction	
Imineskin	2015	STS Storage Tank Equipment Construction	
HANKOOKSHINYAK Pharmaceutical	2015	New Production of Wild ginseng culture medium etc. Equipment Construction	
Penmix	2015	Freeze dryer Cooling tower & Utility Piping Equipment Construction	
SK chemical	2015	Blood preparation Reaction Tank Equipment Turn Key Construction	
SW ENG	2015	Manufacturing Tank PTS Supply System Hook-up Construction	
KukDong Jeyen	2015	STS Manufacturing Tank Construction	
Cheon Bo	2015	New Project STS Tank Facility Manufacture	Chunan
Sam Il pharm	2015	Purified Water construction during GMP Facility complementary Construction	
Bio Land	2015	Ansan Facility PSM Engineering	
SPC	2015	#3 Facility Purified Water LOOP Piping Construction	
Genotech	2015	U/F SYSTEM Equipment Construction	Wan-ju
TAEYANGSUN	2015	Concentrate Production Equipments etc. Turn Key Construction	
Cheil Industries	2015	SUN Seungil Factory Construct Equipment Turn Key Construction	
NongShim ENG	2015	KT&G Tank etc. Equipment Construction	
Korea Yakult	2015	Probiotics Factory Fermentor & Dryer etc. Equipment Construction	
Hugel	2015	Equipment Construction	
DHP Korea	2015	Prepare Tank Equipment Construction	
JW Life Science	2015	Transfusion agent, Clean room And Equipment Construction	
LG Life sciences	2015	Piping Equipment Construction	Ansan
KuhnIl Pharm	2015	Medical Lipid Production Automation Construction	
Ilshinchemical	2015	Nutsche Filter Production	
TAEYANGSUN	2015	Reconstruction Equipments	
KuhnIl Pharm	2015	API 400 ^{kl} Storage Tank & Compound API Equipment Construction	
[2014]			
Bolak	2014	Ribbon Dryer Equipment	
Bioland	2014	Dangerous Indoor Storage Tank installation Construction	
JW Life Science	2014	Process Drain Recycling System Construction etc.	
Kolmar Pharma	2014	RO, EDI Change , Cleaning & Passivation	
ST Pharm	2014	STBP Factory Equipment Construction etc.	Banwol
JW Pharmaceutical	2014	Local Ventilation System & Pipe Equipment	Sihwa

SEC Co.,Ltd is continuing to do business with a focus on making close relationships with Clients as well as improving customer satisfaction by the march of technology and a careful analysis of client requirements.

Name of Company	Year	Performance	Note
[2014]			
Aprogen	2014	GMP Factory Remodeling Equipment Construction	
Redox Bio	2014	PW System Construction	
Yungjin Pharm	2014	Extension Turn Key Construction	
Boryung	2014	API 2nd Process of Extension & Utility Piping Equipment	
Yungjin Pharm	2014	Increase Construction G/L 3Ton etc. Turn Key Construction	
SUN Seungil	2014	KGMP Production facilities Engineering & Detail Design	
KGC Yebon	2014	KGMP Production facilities Turn Key Construction	Chungju
Daewoong Bio	2014	UDCA 10ton Reactor etc. Equipment	
Kuhnil Pharm	2014	Extension Engineering	
Hyundai Pharm	2014	Utility Equipment	Chunan
Sungwoo Chem	2014	Pipe Equipment Construction	
Hanmi Fine Chemical	2014	Sterile Product Equipment Construction	
JW Life Science	2014	Prepare Process improvement Construction	
[2013]			
Yungjin Pharm	2013	API Equipment Production Turn Key Construction	Wong-ju
Hugel	2013	100L Fermentor etc. Equipment	
Eubiologics	2013	600L Fermentor etc. Equipment	
SPC Pharm	2013	Sterile Product Remodeling Equipment Construction	
Doosan Electronic	2013	OLED Equipment Turn key Construction	
DHSCbond	2013	PSM Equipment Construction	
ENZYCHEM	2013	Compound API Equipment 2nd. Turn Key Construction	
Daewoong Bio	2013	Compound API Equipment Construction	
Bioland	2013	Fermentation Equipment Precess Pipe Equipment	Ansan
Interzerosystem	2013	Penicillin-Building Utility Equipment	
Pharmacotech	2013	Compound API Equipment Construction	
ST Pharm	2013	Compound API Process Enginneering & Detail Design	
Daewoong Bio	2013	Sterile Process Tank CIP/SIP System	
TAEYANGSUN	2013	Reactor Equipment. Pipe Equipment	
JW Life Science	2013	Process Drain Recycling System Construction etc.	
Kolmar Pharma	2013	RO, EDI Change , Cleaning & Passivation	
ST Pharm	2013	STBP Factory Equipment Construction etc.	Banwol
JW Pharmaceutical	2013	Local Ventilation System & Pipe Equipment	Sihwa
JW Life Science	2013	STS Tank Production & Precess Pipe Equipment.	

SEC Co.,Ltd is continuing to do business with a focus on making close relationships with Clients as well as improving customer satisfaction by the march of technology and a careful analysis of client requirements.

Name of Company	Year	Performance	Note
[2012]			
Samyang Genex	2012	Large Scale Precess & Charge Tank Production	
CAVAC	2012	Purified water & W.F.I Loop Equipment	
ENZYCHEM	2012	Compound API Equipment. Turn Key Construction	
Samyangbiopharm	2012	Reactor Turn Key Construction	
Ilshinchemical	2012	Yangsan Factory Equipment Etc. Total Turn Key Construction	
Yungjin Pharm	2012	Architectural design & engineering Construction	
LS Group.	2012	Manufacture of Precision Nutsche Filter Full Set	
Bio-Protech	2012	J-Project Turn Key Construction.	
Eubiopharm	2012	Fermentation Equipment Etc. Pipe Equipment	
Bioland	2012	HA Capacity Turn Key Equipment	Ansan
Daewoong Bio	2012	UDCA Reactor etc. Equipment	
JW Life Science	2012	Prepare line Equipment	
Nongshim	2012	Solid Fermentation Turn Key Construction	
Yungjin Pharm	2012	API Engineering.	
CS elsolar	2012	Cheonan Factory Total Equipments.	
DHP Korea	2012	Compound Equipment & Process Pipe Construction	
Shinpoong Co.	2012	Sanitary Process Pipe construction	
Sungkwang Co.	2012	Production Dispensary Equipment Manufacturing etc.	
[2011]			
JW Pharmaceutical	2011	Sihwa Factory cost reduction Construction	Sihwa
JW Pharmaceutical	2011	I PLANT Remodeling	
Sungkwang	2011	Prepare Equipment Newly & Sanitary Construction	
Jeilpharm	2011	Baegam Factory Engineering Construction	Baegam
MPP Co.	2011	Injection System Construction	
Eubiopharm	2011	Compound Reactor Turn Key Constructio	
Easy Bio System	2011	Dryer System Turn Key Construction	
Daewoong Bio	2011	Reactor 10Ton Generation System	
Daewoong Bio	2011	STS Hydrogen Reactor, Hastelloy Reactor System	
Sungwoochem	2011	STS Reactor etc. Extension Turn Key Construction	
Bioland	2011	Enrichment Reactor Equipment etc. Turn Key Construction	
CJ Hasunjung	2011	Enrichment, sauce Reactor Remodeling	Ansung
JW Pharmaceutical	2011	Process Pipe Equipment	
CJ Hasunjung	2011	Improve the sauce Reactor	Jincheon
EASY BIO SYSTEM	2011	Dryer System Turn Key Construction	Chunan
Ls Nikko Co.	2011	Dehydration System Construction	Ansan
Shinpoong Co.	2011	Compound-Room F/D Sanitary Construction	Ansung

SEC Co.,Ltd is continuing to do business with a focus on making close relationships with Clients as well as improving customer satisfaction by the march of technology and a careful analysis of client requirements.

Name of Company	Year	Performance	Note
[2010]			
Hyundaipharm	2011	Drug medicine storage Equipment.	
Yooyoung	2011	Sanitary & Autoclave pipe Construction.	Eumseong
JW Pharmaceutical	2011	Sihwa Factory Process Construction	Sihwa
Yungjin Pharm	2011	Cafa-dong Equipment Construction	Hwaseong
Jeil Pharm	2011	API, CS, AS Engineering & Construction	Yongin
Bioland	2010	Spray & Clean Room Equipment	Ansan
Boryung Co.	2010	Compound-dong Utility Equipment & Piping	
Ilsin Chemical	2010	Compound Dryer & Double Corn Mixer Equipment	
KPX Bio Co.	2010	Fermentation 50kl Etc Total Turn Construction	
Bioland	2010	Filter Press Equipment System	Ochang
Anygen	2010	Sterile Compound Turn Key Construction	
CJ	2010	Oral Compound Equipment Newly Turn Key	Daeso
CWP Co.	2010	Sterile Compound Pipe Construction	Sihwa
GenoTech	2010	20 ^{kl} Storage Generation System	
KPX Bio Co.	2010	Compound Reactor50ton & Turn Key Construction	
CWP Co.	2010	S/DOWN Maintenance	
Yoohan Chemical	2010	S/DOWN Maintenance	
Dong-ah	2010	Purified Water Manufacturing & Sanitary Plumbing	Chunan
PharmaTech Co.	2010	Purified Water Plumbing Etc.	
Myungmun Co.	2010	Injection Piping & Compound Equipment	
Yooyoung	2010	Compound Equipment & Process Pipe construction	
Hana Medicine	2010	Purified Water Pipe Construction	
Sungkwang Co.	2010	Organic Solvent Storage 20 ^{kl} & Compound Equipment & Process Pipe Construction	
[2009]			
Donghwa Co.	2009	Compound Factory Equipment Etc.	
Boryung	2009	Process Sanitary Plumbing	
Ilsin Chemical	2009	Compound Dryer 2 added	
KPX Bio Co.	2009	Fermentation Equipment 20 ^{kl} Etc. Equipment	
Daewoong Co.	2009	Injection Sterile Room Etc Maintenance	
Bioland	2009	Fermentation 10 ^{kl} Etc. Equipment	Ansan
Bioland	2009	Fever Dryer & Clean Room Etc. Equipment	Chunan
Bioland	2009	Prepare & CIP Etc. Total Equipments	Ochang
Nexolon Co.	2009	WCW 20 ^{kl} Etc. Equipment	

SEC Co.,Ltd is continuing to do business with a focus on making close relationships with Clients as well as improving customer satisfaction by the march of technology and a careful analysis of client requirements.

Name of Company	Year	Performance	Note
[2009]			
CWP Co.	2009	Compound Equipment & Piping	Ansan
Dongah Co.	2009	Compound Factory Sterile Process & Sanitary Pipe	Ansan
Easy Bio Co.	2009	Fermentation Equipment & Maintenance Equipment	
GenoTech	2009	Fermentation 25kl Generation & Utility Piping	
CJ	2009	Echun Injection Equipment	
Han-Ol	2009	Purified Water & Injection Line Maintenance	
Daewoong	2009	Aseptic Room Equipment Maintenance	
[2008]			
Bioland	2008	Solvent Distilled Equipment Construction	
Yoohan Chemical	2008	A/B-dong Utility Equipment Maintenance	
Hankook Pharm	2008	Fermentation Equipment 10kl Etc. Equipment	
Daewoong chemical	2008	Vacuum & Waste Water Line Newly Construction	
Easy Bio Co.	2008	Fermentation Equipment & Waste Water Equipment	
CJ Hasunjung Co.	2008	Ansung Factory Sauce Engineering & Equipment	
Samhwa	2008	Pyungta factory Total Newly construction	
CJ Hasunjung Co.	2008	Umsung Factory Equipment & Water Line	
Dongwoosin Tec	2008	PW Sanitary Piping	
CJ	2008	Jinchun Factory Equipment & Total Piping	
Daewoong	2008	PW System & Pipe Construction	Sungnam
Taejun	2008	PW Sanitary Pipe Construction Etc.	
Samil	2008	Utility Pipe Equipment Etc.	
SK Chemical	2008	Heat Treatment Etc.	
Shinpoong Co.	2008	Compound Equipment & Pipe Construction Etc.	
Hyundai Pharm	2008	Production Dispensary Equipment Manufacturing Etc.	
[2007]			
Yoohan Chemical	2007	Compound H2 System Total Piping & Equipment	
Ilsin Chemical	2007	Compound Equipment Etc. Total Construction	
Hanmi F.Chem	2007	cGMP PW & Piping	
CJ Echun Co.	2007	1Part Sterile Extension	
Daelim Chemical	2007	Chilsung Factory Compound Ribbon Dryer Newly	
Myungmun Co.	2007	Compound Factory Equipment Etc. Total	
Daewoong Chem.	2007	Compound Newly 2Factory Equipment Construction	
CJ Echun	2007	2Part General Packing Room Vacuum Construction	
CJ	2007	PW System & Pipe Construction	
CJ	2007	Suwon Factory Maintenance of Equipments	

SEC Co.,Ltd is continuing to do business with a focus on making close relationships with Clients as well as improving customer satisfaction by the march of technology and a careful analysis of client requirements.

Name of Company	Year	Performance	Note
[2007]			
Myungmun Co.	2007	Water for Injection Line Equipment	
Donghwa Co.	2007	Vacuum Dryer, Maintenance of Equipments	EU GMP
Daewon Co.	2007	Daewon Workings Equipment Construction	
Samsung Pharm	2007	Water for Injection Equipment	
Hana Pharm	2007	Water for Injection Sanitary Construction Etc.	
[2006]			
Joong Ang Bio	2006	Fermentation Equipment 10 ^{kl} Etc. Ansan Factory Extension	
Qgen Bio Co.	2006	Fermentation Equipment 15 ^{kl} Etc. Sinhwa Factory Newly Turn Key Construction	
Leadgen Co.	2006	Compound Effector, Dryer & Newly Factory	
Sungwoo Chem.	2006	Compound Factory Equipment Etc. Total	
Daelim Chemical	2006	New J Project & Reactor Etc. New Construction	
Samyang Genex	2006	Compound Equipment & PW Etc. Sanitary Construction	
HV Pharma Co.	2006	Prepare Equipment Newly & Sanitary Construction	
Geno Tech Co.	2006	Fermentation Equipment 35 ^{kl} Etc. Jechun Factory Total Newly Construction	
Hanmi Fine Chemical Co	2006	EU-GMP Manual Etc. & Maintenance	EU GMP
		Compound Reactor& DW System	
ACE Bio Tech	2006	30 ^{kl} Fermentation Extension	
Bicosys Co.	2006	20 ^{kl} Fermentation Equipment Etc. Construction	
PharmacosTech	2006	Compound New Factory Total Newly Construction	
		F/DRYER Repair & Vacuum Dryer, Fever Dryer	
Daewoong Chem.	2006	Sterile Room Equipment Construction	
Daewoong Chem.	2006	ReactorDuct Etc. Equipment	
Hallim Co.	2006	Water for Injection Sanitary Construction Etc.	
Taejun Co.	2006	Water for Injection Sanitary Construction Etc.	EU GMP
Dongguk Co.	2006	Maintenance of Injection Room	
CWP Co.	2006	Compound Asepsis Maintenance of Equipments	
YooYoung Co.	2006	WFI, PW, PURE STEAM Equipment & Sanitary	EU GMP
Samil Co.	2006	WFI, PW Sanitary Extension	
Korean Red Cross	2006	Red Cross Plasma Fraction Centre Newly Equipment	
Gyungdong Co.	2006	Compound-dong Water for Injection Line	EU GMP
CJ	2006	Echun 2Factory Distilled Water, PW System Extension	

SEC Co.,Ltd is continuing to do business with a focus on making close relationships with Clients as well as improving customer satisfaction by the march of technology and a careful analysis of client requirements.

Name of Company	Year	Performance	Note
[2005]			
ACE BioTech Co.	2005	Purified Room Capacity Extension	
Gambro Solution	2005	8M3 REACTOR Drive Part Change AUTO CLAVE TROLLY Shelf Applied	
CJ	2005	Daeso Factory Compound Room Maintenance	
KPC	2005	Nitrogen Occurrence TANK(30M3) Etc. System	
Bio M&D Co.	2005	200L COLUMN TANK	
Yoochan Chem.	2005	A-dong Compound Piping	
Morning Well	2005	Utility, Sanitary Construction Dumpling Line Change & Maintenance	
Bicosys Co.	2005	20 ^{kl} Fermentation Equipment & New Factory	
Bicosys Co	2005	Utility & Waste Water Treatment Construction Laboratory Equipment Construction	
KITECH (Songdo)	2005	PW, PURE STEAM Sanitary Construction Utility Construction	CGMP
Yunsung Fine Chemical	2005	Compound Equipment & R/O Line Newly construction	EU GMP
Samyang Yuji	2005	Cooking Oil Piping Line Construction Floor STS Panel Construction	
Daewoong Chem.	2005	Compound B-dong Reactor& Piping	
Sungpo Chemical Co.	2005	PW, WFI, PURE STEAM SYSTEM & Sanitary Newly Sterile-dong Extension Filter Housing	
Dongyang Bio	2005	Fermentation Piping Etc. New Factory Paking & Freeze Warehouse Newly Construction	
Hanmi Fine Tech	2005	Refrigerant BRINE Applied & Maintenance Compound Reactor& Process Maintenance	EU GMP
CJ Daeso	2005	Fermentation Maintenance Compound-dong Total Repair Compound 1 Sterile Room construction	
Myungmun Co.	2005	WFI STS 316L Sanitary Construction	
Samil Co.	2005	R/O Water Sanitary Construction	
Gyungdong Co.	2005	Water for Injection Line Newly Construction	EU GMP
Youngjin Co.	2005	Factory for Medicine Newly Construction	
Hwanin Co.	2005	R/O Utility Construction	EU GMP
Koron Pharm Co.	2005	Laboratory Equipment Construction	
CWP Co.	2005	WFI STS 316L Sanitary, Compound Effector	
Gukje	2005	Asepsis Reactor & Clean room maintenance	
CJ	2005	DW & PW Storage Replacement	

SEC Co.,Ltd has been joined hands with domestic outstanding enterprises.



03

COMPANY CERTIFICATES

- Business License
- MAIN-BIZ License
- ISO 9001:2015 / ISO 14001:2015
ISO 45001:2018
- Research Institute Certificate
- Venture Business Confirmation
- Certificate of Patent
- Company Credit Rating
- Medical Supply Manufacturing License
- Medical Item KFDA License
- KMCCA Membership
- SEC & Jusung Univ. M.O.U
- SEC & Konyang Univ. M.O.U



사업자등록증
(법인사업자)

등록번호 : 107-86-16729

법인명(단체명) : 주식회사 에스이씨

대표자 : 서항복

개업연월일 : 2002년 04월 17일 법인등록번호 : 110111-2506032

사업장소재지 : 경기도 군포시 군포첨단산업1로 50(부곡동)

본점소재지 : 경기도 군포시 군포첨단산업1로 50(부곡동)

사업의종류 : ☒업태 제조업 ☒종목 의료,정밀,광학기기및시계
제조업 난동품(곡물)가공및처리기/식품용기가열
건설업 및냉각기
정보통신업 기계설비및배관업
서비스 기타소프트웨어개발
학술연구용역업

발급사유 :

사업자단위과세적용사업자여부 : 여()부(✓)

전자세금계산서전용전자우편주소 :

2023년 06월 14일

안양세무서장





사업자등록증

(법인사업자)

등록번호 : 371-87-01106

법인명(단체명) : 에스이씨(주)

대표자 : 서향복

개업연월일 : 2018년 12월 10일 법인등록번호 : 150111-0262092

사업장소재지 : 경기도 화성시 송산면 송산산단2길 14

본점소재지 : 경기도 화성시 송산면 송산산단2길 14

사업의종류 :

업태

제조업제조업

종목

금속 탱크 및 저장 용기 제조업
그 외 기타 일반 목적용 기계 제조업

발급사유 :

사업자 단위 과세 적용사업자 여부 : 여() 부(✓)

전자세금계산서 전용 전자우편주소 :

2022년 09월 22일

화성세무서장













GRATIS

PEMERINTAH PROVINSI DKI JAKARTA
UNIT PELAKSANA PELAYANAN TERPADU SATU PINTU
KOTA ADMINISTRASI JAKARTA UTARA

**TANDA DAFTAR PERUSAHAAN
PERSEROAN TERBATAS (PT)**

BERDASARKAN UNDANG-UNDANG REPUBLIK INDONESIA NOMOR 3 TAHUN 1982 TENTANG WAJIB DAFTAR PERUSAHAAN
NOMOR : 00237/24.3.0/31.72/-1.824.271/2017

NOMOR TDP 09.01.1.46.55233	BERLAKU S/D TANGGAL 17 FEBRUARI 2022	PENDAFTARAN : BARU PEMBAHARUAN :
-------------------------------	---	-------------------------------------

NAMA PERUSAHAAN : THE GLOBAL ASEAN, PT	STATUS : KANTOR TUNGGAL
PENANGGUNG JAWAB / PENGURUS : SEO HANG BOK	
ALAMAT : RUKAN PLAZA PASIFIK BLOK. A-3 NO. 64 LT. 1 JL. BOULEVARD BARAT RAYA KEL. KELAPA GADING BARAT, KEC. KELAPA GADING, JAKARTA UTARA	
NPWP : 81.216.342.6-043.000	
NOMOR TELEPON : (021) 4507147	FAX : 4507147
KEGIATAN USAHA POKOK : PERDAGANGAN BESAR MESIN KANTOR DAN INDUSTRI, SUKU CADANG DAN PERLENGKAPANNYA	KBLI : 46591

JAKARTA, 17 FEBRUARI 2017

KEPALA UNIT PELAKSANA PELAYANAN TERPADU SATU PINTU
KOTA ADMINISTRASI JAKARTA UTARA
SELAKU KEPALA KANTOR PENDAFTARAN PERUSAHAAN



drg. LAMHOT TAMBUNAN, MKM
NIP. 197301252000031005





제 R100601-03292 호

경영혁신형 중소기업(Main-Biz) 확인서

업 체 명 : (주)에스이씨

대표자명 : 서항복

주 소 : 충북 청주시 흥덕구 오송읍 오송생명5로 305, 203호

유효기간 : 2022.05.26 ~ 2025.05.25

위 업체는 경영혁신형 중소기업 육성사업에 의해
선정된 경영혁신형 중소기업(Main-Biz)임을 확인
합니다.



2022 년 05 월 26 일

중소벤처기업부장





CERTIFICATE

SEC CO., LTD.

Rm 203, 305 Osongsaengmyeong 5-ro, Osong-eup, Heungdeok-gu, Cheongju-si, Chungcheongbuk-do, Korea

This is to certify that the Quality Management System and the scope of the certification of the above mentioned company meets the requirement of

ISO 9001 : 2015 / KS Q ISO 9001 : 2015

For the following scope of registration

Design, Manufacture and Installation of Mechanical Equipment and Mechanical Piping

Certificate Number: JK-13465
Date of Initial Approval: 11 July 2008
Re-issued Date: 23 June 2022
Expiry Date: 09 July 2023

Approved by 
Sea Il Son, President

Page 1/1

This management system certificate applies to the operations of the address shown above and not transferable. It remains the property of International Industrial Certification Co., Ltd. (IIC) accredited by JAS-ANZ a signatory of IAF MLA and is valid only if regulatory surveillance audit is conducted within the required time.



International Industrial Certification
Gayang Technotown No. 803-2,
217, Heojun-ro, Gangseo-Gu, Seoul, Korea
Tel: +82 (0)2 6097 9001 • Fax: +82 (0)2 6097 9005
info@iicregistrar.com

www.iicregistrar.com



CERTIFICATE

SEC CO., LTD.

Rm 203, 305 Osongsaengmyeong 5-ro, Osong-eup, Heungdeok-gu, Cheongju-si, Chungcheongbuk-do, Korea

This is to certify that the Environmental Management System and the scope of the certification of the above mentioned company meets the requirement of

ISO 14001 : 2015 / KS I ISO 14001 : 2015

For the following scope of registration (IAF: 17)

Design, Manufacture and Installation of Mechanical Equipment and Mechanical Piping



Certificate Number: JEK-23711

Date of Initial Approval: 09 May 2023
Expiry Date: 08 May 2026

Approved by 
Sea Il Son, President

Page 1/1

This management system certificate applies to the operations of the address shown above and not transferable. It remains the property of International Industrial Certification Co., Ltd. (IIC) accredited by IAS a signatory of IAF MLA and is valid only if regulatory surveillance audit is conducted within the required time.



International Industrial Certification
Gayang Technotown No. 803-2,
217, Heojun-Ro, Gangseo-Gu, Seoul, Korea
Tel: +82 (0)2 6097 9001 • Fax: +82 (0)2 6097 9005
info@iicregistrar.com

www.iicregistrar.com



CERTIFICATE

SEC CO., LTD.

Rm 203, 305 Osongsaengmyeong 5-ro, Osong-eup, Heungdeok-gu, Cheongju-si, Chungcheongbuk-do, Korea

This is to certify that the Occupational Health & Safety Management System and the scope of the certification of the above mentioned company meets the requirement of

ISO 45001 : 2018 / KS Q ISO 45001 : 2018

For the following scope of registration (IAF: 17)
Design, Manufacture and Installation of Mechanical Equipment and Mechanical Piping



Certificate Number: JOK-1312

Date of Initial Approval: 09 May 2023
Expiry Date: 08 May 2026

Approved by 
Sea Il Son, President

Page 1/1

This management system certificate applies to the operations of the address shown above and not transferable. It remains the property of International Industrial Certification Co., Ltd. (IIC) accredited by IAS a signatory of IAF MLA and is valid only if regulatory surveillance audit is conducted within the required time.



International Industrial Certification
Gayang Technotown No. 803-2,
217, Heojun-Ro, Gangseo-Gu, Seoul, Korea
Tel: +82 (0)2 6097 9001 • Fax: +82 (0)2 6097 9005
info@iicregistrar.com

www.iicregistrar.com

[문서번호: jiZr-PkqL-VvMJ-OIsQ]

[발급일자: 2018년 07월 27일]

제 20063283 호

기업부설연구소 인정서

1. 연 구 소 명: (주)에스이씨 기업부설연구소
[소속기업명: (주)에스이씨]
2. 소 재 지: 충청북도 청주시 흥덕구 오송읍 정충연제로 781
A동 2층 기업부설연구소
3. 신고 연월일: 2016년 09월 20일
(최초인정일: 2006년 12월 21일)

과학기술정보통신부

「기초연구진흥 및 기술개발지원에 관한 법률」 제14조의
2제1항 및 같은 법 시행령 제27조제1항에 따라 위와 같이
기업부설연구소로 인정합니다.

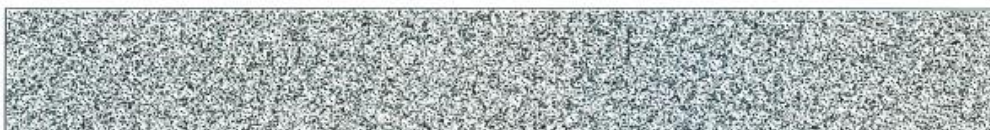


2016년 9월 21일

한국산업기술진흥협회장



* 한국산업기술진흥협회에서 발급되었으며 "http://WWW.RND.ORG.KR"에서 "문서번호"를 입력하면 원본대조 및 유효성을 검증할 수 있습니다.



제 20160401829 호

벤처기업확인서

업 체 명 : (주)에스이씨
 대 표 자 : 서항복
 소 재 지 : 충청북도 청주시 흥덕구 오송읍 정충연제로 781
 확 인 유 형 : 기술평가대출기업(중진공)
 평 가 기 관 : 중소기업진흥공단
 유효 기 간 : 2016년10월07일 ~ 2018년10월06일

위 업체는 『벤처기업육성에 관한 특별조치법』 제25조의
 규정에 의하여 벤처기업임을 확인합니다.

2016년 10 월 07 일



중소기업진흥공단 이사장



특허증

CERTIFICATE OF PATENT



특허

Patent Number

제 10-1642359 호

출원번호

Application Number

제 10-2015-0012652 호

출원일

Filing Date

2015년 01월 27일

등록일

Registration Date

2016년 07월 19일

발명의 명칭 Title of the Invention

폐열경화성 수지를 이용한 흡착제 제조방법

특허권자 Patentee

주식회사 에스이씨(110111-*****)

경기도 화성시 장안면 3.1만세로 519-53

발명자 Inventor

등록사항란에 기재

위의 발명은 「특허법」에 따라 특허등록원부에 등록되었음을 증명합니다.

This is to certify that, in accordance with the Patent Act, a patent for the invention has been registered at the Korean Intellectual Property Office.



2016년 07월 19일

특허청장

COMMISSIONER,
KOREAN INTELLECTUAL PROPERTY OFFICE

최 동 규

특허증

CERTIFICATE OF PATENT

특 허

Patent Number

제 10-1649918 호

출원번호

Application Number

제 10-2014-0064519 호

출원일

Filing Date

2014년 05월 28일

등록일

Registration Date

2016년 08월 16일

발명의 명칭 Title of the Invention

막 세정 방법

특허권자 Patentee

주식회사 에스이씨(110111-*****)

경기도 화성시 장안면 3.1만세로 519-53

발명자 Inventor

등록사항란에 기재

위의 발명은 「특허법」에 따라 특허등록원부에 등록되었음을 증명합니다.

This is to certify that, in accordance with the Patent Act, a patent for the invention has been registered at the Korean Intellectual Property Office.



2016년 08월 16일

특허청장

COMMISSIONER,
KOREAN INTELLECTUAL PROPERTY OFFICE

최 동 규

CREDIT RATING

DNA PLUS

(주)에스이씨 | 107-86-16729 | 서항복 | ECC202205007841

기업정보

기업체명	(주)에스이씨 (SEC CO.,LTD.)			신용등급
사업자등록번호	107-86-16729	법인번호	110111-2506032	BB
본사주소	(28166)충청북도 청주시 흥덕구 오송읍 오송생명5로 305, 203호(프라임시티오피스텔)			
대표자	서항복			
전화번호	031-351-9341			
산업분류	금속탱크 및 저장용기 제조업			현금흐름등급
설립일	2002년 04월 23일			C-
재무결산일	2021년 12월 31일	보고서 최종수정일	2022년 05월 25일	
신용등급 유효기간	2022년 05월 25일~2023년 05월 24일			

신용등급이력

결산기준일	정기평가			하반기평가			Watch 등급
	평가일	신용등급	현금흐름등급	평가일	신용등급	현금흐름등급	
2021/12/31	2022/05/25	BB	C-	-	-	-	정상 2022년10월16일 현재
2020/12/31	2021/05/28	BB	B	2021/12/01	BB	B	
2019/12/31	2020/04/27	BB-	B	-	-	-	

주요 경영 현황

주요제품	경영정보		판매처(%)		주요주주(%)	
생산설비(SUS REACTOR 설비)	종업원	44 명	동국생명과학(주)	28	서항복	30.2
생산설비(TURN KEY)	기업규모	중기업	(주)큐라티스	10	이남희	10.3
생산설비(기계장치 부분TURN KEY)	기업형태	비외감	연성정밀화학(주)	8	서재인	9.5
생산설비(기타)	자본금	500 백만원	제이더블유생명과학(주)	8	장정희	16.6
	주거래은행	중소기업은행 군포공단 지점	에스케이케미칼(주)	5	정명자	7.3

주요 재무 현황

(단위:백만원)

결산기준일	총자산	부채총계	자본총계	매출액	영업이익	당기순이익
2021/12/31	11,882	4,239	7,642	18,433	488	490
2020/12/31	11,914	4,362	7,551	28,483	586	542
2019/12/31	11,883	4,676	7,207	27,061	727	532

(단위:%)

결산기준일	매출성장률	영업이익률	순이익률	유동비율	부채비율	차입의존도
2021/12/31	-35.3	2.6	2.7	211.4	55.5	29.6
2020/12/31	5.3	2.1	1.9	174.8	57.8	23.6
2019/12/31	49.9	2.7	2.0	855.0	64.9	35.1

Korea Food & Drug Administration



문서확인번호 0223-5156-3570-6171



제 2759 호

의료기기 제조업 허가증

업소명	(주)에스이씨
소재지	업 소 : 경기 화성시 장안면 수촌리 1415-6
	창 고 : 경기 화성시 장안면 수촌리 1415-6
	실험실 : 경기 화성시 장안면 수촌리 1415-6
대표자	서항복
생년월일	1963년 05월 20일
허가조건	

의료기기법 제6조 및 동법시행규칙 제3조의 규정에 따라
위와 같이 허가합니다.

2008년 10월 04일

식품의약품안전청



본 증명서는 인터넷으로 발급되었으며 식품의약품안전청(<http://emed.kfda.go.kr/>) 홈페이지에서 확인할 수 있습니다.

01_ COMPANY INFO

02_ BUSINESS INFO

03_ COMPANY CERTIFICATES

04_ EQUIPMENTS



문서확인번호 0223-4382-0600-7492



제허 08-688 호

의료기기 제조품목 허가증

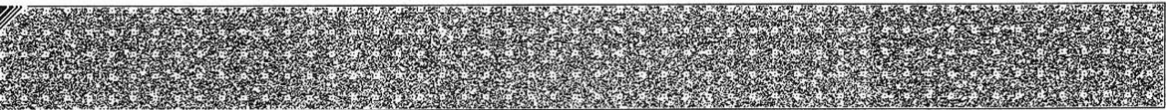
업허가구분 : 제2759 호
구 분 : 제조

제품명(품목명 및 형명)	고압증기멸균기(SEC-AC300)	분류번호(등급)	A04010(2)
형상 및 구조	http://emed.kfda.go.kr 참조		
원 자 재	http://emed.kfda.go.kr 참조		
제조방법	http://emed.kfda.go.kr 참조		
사용목적	http://emed.kfda.go.kr 참조		
사용방법	http://emed.kfda.go.kr 참조		
사용시 주의사항	http://emed.kfda.go.kr 참조		
포장단위	1set		
저장방법 및 유효기간	http://emed.kfda.go.kr 참조		
시험규격	제 의기심 74795-17747호(2008.9.5.)		
제조원(수입의 경우)			
허가조건	별첨		
비고	http://emed.kfda.go.kr 참조		

의료기기법 제6조 및 동법시행규칙 제5조 제2항의 규정에 따라 위와 같이 허가합니다.

2008년 10월 04일

식품의약품안전청



본 증명서는 인터넷으로 발급되었으며 식품의약품안전청(<http://emed.kfda.go.kr>) 홈페이지에서 확인할 수 있습니다.



제정기09-53 호



대한설비건설협회
Korea Mech. Const. Contractors Association

회 원 증

건설산업기본법 제9조의 규정에 의거 전문
건설업등록을 받음

상 호 (주)에스이씨
대 표 자 서 항 복
회 원 번 호 31-2009-0065

기계설비공사업 등록번호 화성-2009-10-9

가스시설시공업(1종) 등록번호

상기자는 건설산업기본법 제50조의 규정에
의하여 대한설비건설협회 회원임을 증명함.

2009 년 6 월 2 일



대한설비건설협회장



(주)에스이씨와 주성대학 바이오생명과학과의 산·학 협약서

제 1조(목적) 본 협약은 (주)에스이씨와 주성대학 바이오생명과학과의 상호 필요로 하는 산·학 교류 사업을 추진함을 그 목적으로 한다.

제2조(상호 존중의 원칙) 협약 후 상호간에 발생하는 모든 산·학 교류 관련 사업이 신의와 성실로써 협력한다.

제3조(협력사업 내용) 목적 달성을 위한 상호협력 내용은 다음과 같이 한다.

- ① 주성대학 바이오생명과학과는 (주)에스이씨에 필요한 적절한 기술·연구 인력을 성실히 교육하여 제공한다.
- ② (주)에스이씨는 주성대학 바이오생명과학과 재학생에게 현장실습의 장을 제공하여 효과적인 교육을 협력한다.
(단, 시기, 장소, 실습참여인원은 양측대표가 협의하여 정한다.)
- ③ (주)에스이씨는 주성대학 바이오생명과학과 졸업생 중 적당한 인원을 연구원으로 고용하도록 노력하고 연간 일경금액의 장학금을 학과에 지원한다.
- ④ 다양한 산·학 공동 연구를 협력하여 추진한다.
- ⑤ 기타 양 기관이 산·학 교류에 필요하다고 인정하는 사항

제4조(조정기구) 본 협약서 실행과 관련하여 제반사항을 협의조정하는 기구는 양측의 대표가 주관하여 협의 시행한다.

본 협약을 증명하기 위하여 협약서 2부를 작성, 대표가 각각 서명한 후 1부씩 보관한다.

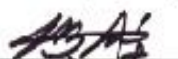
2007 년 01 월 08 일

경기도 회성시 장안면 수촌리 1415 6번지 충북 청원군 내수읍 덕암리 산 4번지

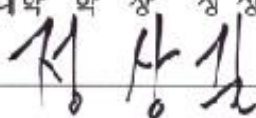
(주)에스이씨 대 표 서 향 북

주성대학 학 장 성 상 길

서명



서명





(주)에스이씨 · 건양대학교

산·학 교류 협약서



(주)에스이씨와 건양대학교 산학협력단은 양 기관의 상호발전을 위하여 다음과 같이 상호협력에 관한 업무협약을 체결한다.

제1조(목적) 본 협약은 산학협력선도대학 육성사업의 효율적 운영과 양 기관의 발전을 위해 상호 협력하고 이를 통해 공동의 발전을 도모하는데 필요한 기본적인 사항을 규정함을 목적으로 한다.

제2조(협력사업의 내용) 이 협약에 따라 다음 각 호의 사항에 대하여 서로 협력한다.

1. 현장실무능력향상을 위한 현장실습, 인턴십 및 취업기회 제공
2. 우수인력 양성 및 인력지원
3. 양 기관 보유장비 활용
4. 공동 관심분야의 연구 및 기술개발
5. 기타 이 협약의 목적에 부합하는 협력 필요사항

제3조(신의·성실의 원칙) 본 협약은 상호 신의·성실의 원칙에 따라 이행하고 자료 및 정보를 제3자에게 제공할 수 없으며, 협약서에 명시되지 않은 사항은 양 기관 대표자간의 상호 협의를 통해 결정한다.

제4조(협약서의 효력) 본 협약서는 양 기관의 서명한 날로부터 발효되며, 일방이 해지 의사를 표명하지 않는 한 유효하다.

2014년 2월 18일

대표이사 서항복
(주)에스이씨

단장 홍영기
건양대학교 산학협력단

04

EQUIPMENTS

- Equipments
- Engineering Personnel

SEC Co., Ltd. Equipment Holders Table

[1/2]

no	equipment	standard	quantity	note
1	SANITRARY Automatic Welding Machine	ACE-7DX	1	
2	SANITRARY Automatic Welding Machine	PIPE-ACE	4	
3	SANITRARY Dedicated Cutting Machine	RA4	4	
4	SANITRARY Dedicated Cutting Machine	CC120	5	
5	SANITRARY Dedicated Cutting Machine	CC170	3	
6	Acid Cleaning (PASIVATION) Equipment		2	
7	Digital Level Meter	MDS-600	5	
8	Oxygen Concentration Meter	XL-326AVA	1	
9	PH-METER	TI9000	2	
10	SANITRARY SAW		1	
11	TIG Welding Machine	300A외	38	
12	CAD Welding Machine		3	
13	PVC Welding Machine		3	
14	ARC Welding Machine	10KW	4	
15	ARC Welding Machine	15KW	7	
16	Plasma Cutting Machine		5	
17	AIR Plasma	M-75	2	
18	AIR Plasma	AT-61P	1	
19	Pipe Machine		4	
20	Bench Drill Machine		4	
21	Table Grinder		5	
22	Compressor	2 HP	3	
25	Compressor	3 HP	3	
23	Compressor	7.5 HP	1	
24	Compressor	5 HP	1	
26	Core Drill	2HP	3	
27	TRANSFORMER	440V/220V	2	
28	Speed Cutter	4-INCH	12	
29	Speed Cutter	17-INCH	8	
30	Crain	5.0 TON	2	

SEC Co., Ltd. Equipment Holders Table

[2/2]

no	equipment	standard	quantity	note
31	Hoist	10 TON	4	
32	PP Fusion Welding Machine		3	
33	Magnetic Drill Machine		3	
34	Hand Car	2 TON	2	
35	Hand Car	3 TON	1	
36	CO2 Welding Machine	180CX	1	
37	CO2 Welding Machine	300CX	2	
38	CO2 Welding Machine	500CX	3	
39	Hammer Drill		5	
40	Chain Block	1 TON	5	
41	Chain Block	2 TON	2	
42	Chain Block	3 TON	6	
43	Hydraulic	30 TON	2	
44	Milling	2호	1	
45	Milling	3호	1	
46	Shelf	7자	1	
47	Shelf	8자	1	
48	High Frequency Grinder	4"	12	
49	High Frequency Hand Miller		10	
50	High Frequency Generator	12KW	1	
51	Roller for TANK	260 ϕ *2500L	3	
52	Roller for TANK	160 ϕ *3500L	1	
53	Coffe	22T*9500*490	4	
54	High Pressure Washer	QUADRO 1000	1	
55	Hand Grinder	7"	17	
56	Hand Grinder	4"	22	
57	Automatic Pipe Bending Machine	3호	1	

[illegible]



SEC CO., LTD.

Factory I / Osong Bio Center, 781, Jeongjungyeonje-ro, Osong-eup, Heungdeok-gu, Cheongju-si,
R&D Center Chungcheongbuk-do, Republic of Korea
T : +82. 43. 235. 9341 F : +82. 43. 235. 9342 E : secglobal@secglobal.co.kr

Factory II / 50, Gunpocheomdansaneop 1-ro, Gunpo-si, Gyeonggi-do, Republic of Korea
Head Office T : +82. 31. 351. 9341 F : +82. 31. 351. 9343